

SPAX[®]

BY FAR
THE **BEST!**

THE SPAX ADJUSTING SCREW

Wood screw for continuously adjustable spacing between battens and wooden substructures



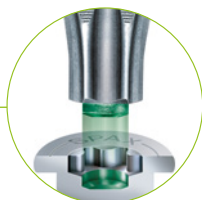
MADE IN
Germany

SPAX ADJUSTING SCREW

FEATURES

THE T-STAR *plus* SYSTEM

T-STAR *plus* Bit in combination with T-STAR *plus* drive for better force transmission and guiding



FLAT HEAD

Clean sinking and high holding forces

RETAINING GROOVES

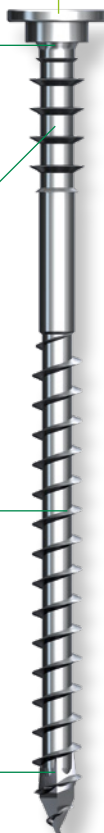
Ensure a sturdy hold of the wooden substructure

SPAX THREAD

Enables fast insertion with minimal effort thanks to slide coating and optimal thread pitch

4CUT AND SERRATIONS

Effectively prevents splitting and reduces the driving torque. No pre-drilling necessary (depending on wood).





THE SPAX ADJUSTING SCREW

FULL CONTROL IN ACTION

The SPAX adjusting screws are the ideal helpers for all wood-to-wood connections where levelling is required. This is made possible by the retaining grooves below the screw head, which grip into the wood of the component during the adjustment process to ensure secure assembly with millimetre precision. Thanks to its WIROX coating, the screw can be used both indoors and in outdoor areas without direct exposure to the weather.

Product benefits:

- ⊗ Time-saving: fast and easy installation since shimming with wedges is no longer required*
- ⊗ Fastening with low edge clearances possible - prevents splitting thanks to *4CUT* and thread serrations
- ⊗ Simple further processing – thanks to the flat head, the wood fibres are pulled downwards, enabling the seamless positioning of the next component (e.g. plasterboard)
- ⊗ No pre-drilling required in softwood
- ⊗ Fast gripping of the screw due to thread up to the screw tip
- ⊗ Can be used in service class 1 and 2 in acc. with DIN ISO 1995

*For applications in the flooring sector, shimming with wedges is recommended after the adjustment process for load reasons



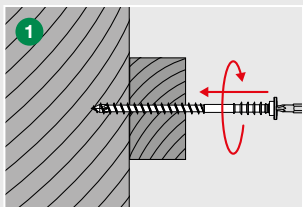
Applications:

Alignment of wooden substructures on substrates made of solid wood, derived timber products and engineered wood boards in renovations and new buildings. Common applications are:

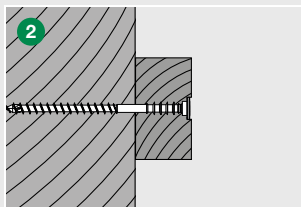
- ✘ Suspended, ventilated ceiling cladding
- ✘ Ventilated wall cladding
- ✘ Floor renovations
- ✘ Counter battens for insulation under and between rafters
- ✘ Ventilated facade cladding*

*National building regulations must be observed!

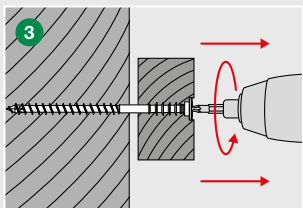
Assembly:



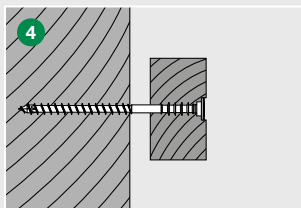
1 Screw the SPAX adjustment screw completely through the battens into the wooden base



2 Countersink the screw head at least 1mm into the battens



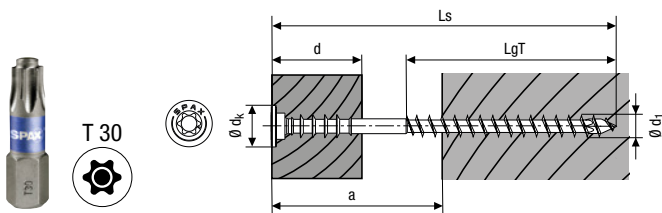
3 Carefully unscrew the screw using left-handed rotation until the desired spacing is reached



4 Installation result

SPAX ADJUSTING SCREW

FACTS AND FIGURES



SPAX Adjusting Screw										
Thread \varnothing d1	6.0 \varnothing d _k = 12.0									
Dimensions [mm]										
Total length Ls	60	70	80	90	100	110	120	130	145	160
Thread length LgT	32	37	46	61	61	68	68	68	68	68
Max. distance a	25	30	40	50	60	70	80	90	105	120
Max. wood thickness d	20	25	30	30	40	40	40	40	40	40



You'll also find us at:

- facebook.com/spax
- instagram.com/spax_international
- youtube.com/user/SPAXinternational

Subscribe to newsletter:

- spax.com/newsletter

SPAX International GmbH & Co. KG

ALTENLOH, BRINCK & CO - GRUPPE SEIT 1823

Kölner Straße 71 – 77 · 58256 Ennepetal · Germany
Tel: +49 2333 799-1967 · Fax: +49 2333 799-199
info@spax.com · www.spax.com

Your retailer:

